

Adopted by:

- Avery County**
Date: October 6, 2014
- Town of Banner Elk**
Date: October 13, 2014
- Town of Beech Mountain**
Date: October 14, 2014
- Town of Crossnore**
Date: December 9, 2014
- Town of Elk Park**
Date: October 6, 2014
- Town of Newland**
Date: October 7, 2014
- Town of Seven Devils**
Date: November 12, 2014
- Village of Sugar Mountain**
Date: October 28, 2014
- NCDOT**
Date: January 8, 2015

Endorsed by:

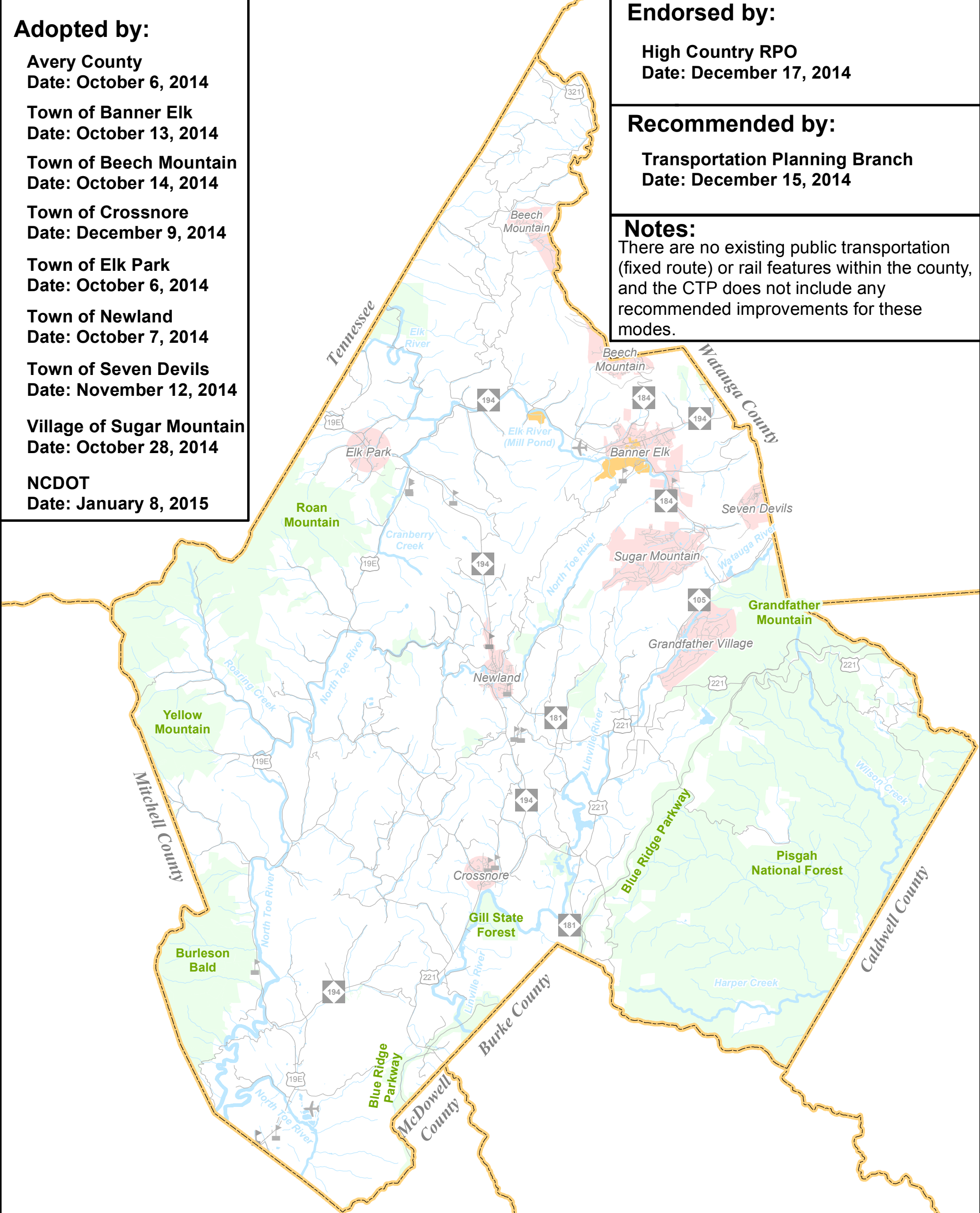
High Country RPO
Date: December 17, 2014

Recommended by:

Transportation Planning Branch
Date: December 15, 2014

Notes:

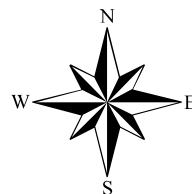
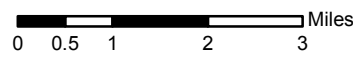
There are no existing public transportation (fixed route) or rail features within the county, and the CTP does not include any recommended improvements for these modes.



- Sheet 1 Adoption Sheet
- Sheet 2 Highway Map
- Sheet 3 Public Transportation and Rail Map
- Sheet 4 Bicycle Map
- Sheet 5 Pedestrian Map

Legend

- Roads
- Rivers and Streams
- Schools
- Airport
- County Boundary
- Lees-McRae College
- Municipal Boundary
- Conservation Land



Adoption Sheet

Avery County

Comprehensive Transportation Plan

Plan Date: August 25, 2014